

DECON Condensate Pot

Condensate is steam that has been condensed back into water. Condensate should not be confused with demineralized, de-ionized, make up, or softened water. When the condensate enters the boiler feed pump additional chemicals are added and the product is now called boiler feed water.

Condensate Chambers are designed to trap condensate and foreign matter that may accumulate in gaseous service lines. They also effective for providing a liquid seal on steam and corrosive service lines.

FEATURES

- Use as liquid or condensate traps, seal pots, vapor chambers and knockout pots.
- All connectors are furnished with plastic plugs.
- Chambers are made from seamless pipe and weld caps. All pipe connections are 3000# half-couplings mounted on 90° angle. Extra connections can be furnished upon customer request.
- All welding as per ASME SEC.IX.
- All buttweld joints will be 100% radiographed and fillet weld will be D.P. tested.
- All condensate pot will be hot dep galvanised.
- All threads will be protected with dead plugs/plastic caps.
- Piping code compliance ASME B31.1 and PED category I, Module-A.

TECHNICAL SPECIFICATIONS

- Standard size: Pipe size 2", 3", 4", 6" and larger size upon request.
- Standard length: Pipe length 8", 10", 12", and larger length upon request.
- Working pressure: 6000 PSIG(41.34 MPa).
- Standard Material of construction: 316SS, 321SS, 304SS, C.S., ASTM A106 Gr B.
- Optional Sour Gas service valves are available, confirming to NACE Std. MR-01-75.
- Pipe Schedule: 40, 80, 160, xx seamless pipe.
- Chamber as per ISA RP3.
- NPT as per ANSI B2.1 taper pipe thread 1/2" furnished.
- Socketweld as per ANSI B16.11
- Buttweld as per ANSI B16.9
- All chamber are 100% factory tested prior to shipment.

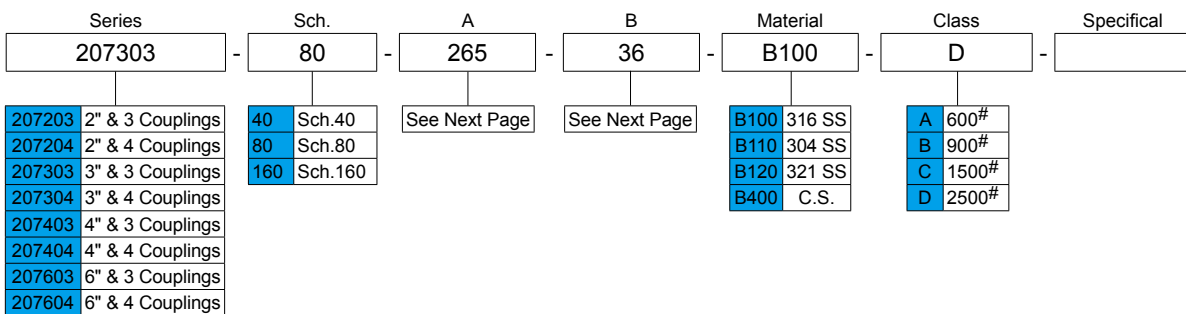
APPLICATION

- Refineries, liquid petroleum gas processing plant, petro-chemical plants, systems difficult to shut off due to solid contents dust, dirt etc.

TESTING

- Hydrostatic shell test is performed at 1.5 times the working pressure.

Ordering Informatin



- These are the standard ordering number, DECON will provide the final ordering number based on the customer's specification.

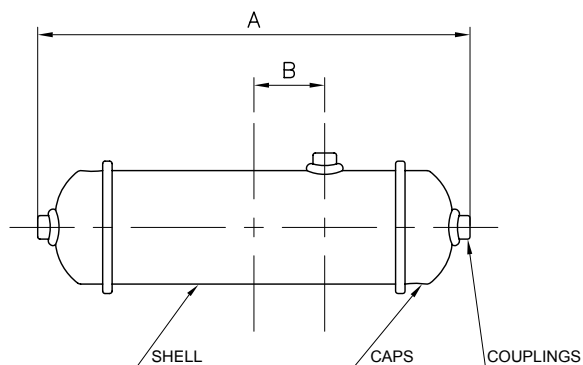


Fig.1

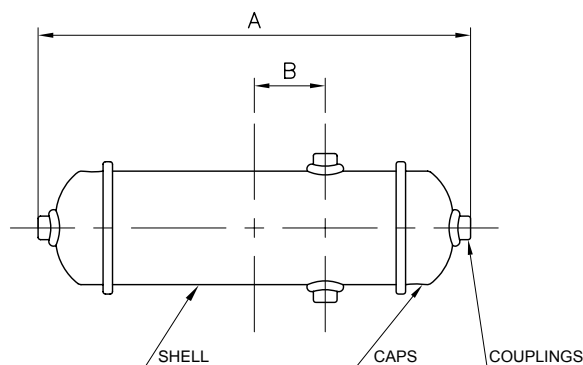


Fig.2

Notes:

- * All connections are 1/2"(15) size and can either be threaded or provided with socket weld ends.
- * Threaded connection(NPT): As per ANSI B 2.1
- * Threaded connection(BSP): As per BS 2779
- * Socket welding ends: As per ANSI B 16.11

Material	Shell	Caps
C.S.	A106	A105
304 SS	A312 TP304	A182 F304
316 SS	A312 TP316	A182 F316
321 SS	A312 TP316	A182 F321
A.S.	A335 TP22/11	A182 F22/F11

Test Pressure(psi)

Size	SCH40	SCH80	SCH160
3"	1351	2204	3911
4"	1280	2133	3697
6"	1138	1778	2986

Size	Schedule	Dimension 1		Dimension 2		Dimension 3		*Customer Requirement	
		A	B	A	B	A	B	A	B
3"(80)	40	265	36	356	51	356	57		
	80	265	36	356	51	356	57		
	160	265	36	356	51	356	57		
4"(100)	40	265	25	356	51	356	57		
	80	265	25	356	51	356	57		
	160			356	51	356	57		
6"(150)	40			356	25	356	57		
	80			356	25	356	57		
	160			356	25	356	57		

● Ordering number will be provided after the dimensions A & B are specified by the customer.